



D5.2 ENHANCE Website

WP5: Dissemination, Communication and Exploitation

Authors: Fouad HADJALI, Inna Petrenko

Date: 28.02.2025

Title of Deliverable	Deliverable D5.2: ENHANCE Website
Type of Deliverable	Other
Dissemination Level	Public
Work Package	WP5 – Dissemination, Communication and Exploitation
Lead Beneficiary	Enrich Global (EG), Amaranthus (AMRN)
Author(s)	Fouad Hadjali, Inna Petrenko
Contributors	SingularLogic (SLG)
Primary Contact and Email	fouad.hadjali.pro@gmail.com innapetrenko.ip@gmail.com
Data Due	28.02.2025
Date Submitted	01/07/2025
Status (In progress / Draft / Completed)	Completed
Reviewed by (if applicable)	Antonia Vronti (SLG), Svetlana Klessova (GAC)
Suggested Citation	Fouad Hadjali, Inna Petrenko (2025). ENHANCE Website Deliverable D5.2, Horizon Europe grant no. 10113447

Date	Version	Contributors	Comments
28/02/2025	0.1	Fouad Hadjali (AMRN)	Feedback requested from WP5 Leader
28/02/2025	0.2	Giannis Adamos (AMRN), Inna Petrenko (EG)	Internal Review
04/03/2025	0.3	Fouad Hadjali (AMRN)	Website Development inquiries + Feedback requested from Project Manager
07/03/2025	0.4	Antonia Vronti (SLG)	Comments submitted to the authors
07/03/2025	0.5	Svetlana Klessova (GAC)	Comments submitted to the authors

Table of Contents

Executive Summary	6
1. Website Description	7
2. Website structure	8
2.1 Main Menu	8
2.2 Footer	8
3. Home page	9
4. About ENHANCE	10
5. Case Studies	12
6. News & Events	13
7. Library	14
8. Networking	15
9. Contact	16
10. Post-Project Website Support, Sustainability, and Updates	17

Table of Abbreviations

Abbreviations	Explanation
D	Deliverable
EG	Enrich Global
KER	Key Exploitable Result
SLG	SingularLogic
URL	Uniform Resource Locator

Table of Figures

Figure 1: Website menu	8
Figure 2: Website footer	8
Figure 3: Home page	9
Figure 4: ENHANCE presentation and key info	10
Figure 5: Partners' logos with clickable button to their websites	11
Figure 6: The Advisory Board section will display the names of its members	11
Figure 7: Case studies' presentations on the dedicated page	12



ENHANCE

enhance-onehealth.eu

Figure 8: News & Events page displaying relevant social media posts and articles	13
Figure 9: Different resources already available in the Library section	14
Figure 10: Networking page displaying projects and networks in which ENHANCE is involved	15
Figure 11: Contact info and form for inquiries in the dedicated section	16

Executive Summary

Deliverable D5.2 presents the ENHANCE project website, offering a detailed overview of its structure and key features. The website was designed and developed by SingularLogic and AMARANTHUS, in close collaboration with ENHANCE project partners, incorporating their feedback throughout the entire development process.

The **ENHANCE website** aims to provide a concise, engaging, and clear description of the project and its activities. It is designed to serve as the primary hub for ENHANCE outreach, acting as a dynamic online tool to:

- **Explain** the project's objectives and key facts,
- **Showcase** the case studies,
- **Share** the latest news and event updates,
- **Provide access** to downloadable ENHANCE documents, including deliverables, press releases, and scientific reports,
- **Host** images, videos, and other communication materials such as media kits, leaflets, posters, and newsletters,
- **Introduce** the project's partners and the External Advisory Board,
- **Highlight** collaborations with other networks and projects,
- **Connect** to social media accounts and display the latest updates from LinkedIn and YouTube.

The website content has been developed with a focus on simplicity, clarity, and accessibility, ensuring that the ENHANCE project is easily understood by the general public. It follows the ENHANCE **visual identity guidelines**, making the project instantly recognizable.

This deliverable provides a comprehensive overview of the website's sections, illustrated with screenshots. The **ENHANCE website** was officially launched on the 28th of February 2025, and is available at: <http://www.enhance-onehealth.eu/>



1. Website Description

The **ENHANCE website** serves as the primary repository for project outcomes and a central hub for online communication and dissemination from the project's inception. As the official online platform for ENHANCE, it provides **comprehensive access** to key information, data, and materials related to the project, its partners, case studies, events, and other relevant activities.

Over the project's three-year duration (2024–2027), the website is expected to attract at least 6,200 visits from relevant stakeholder groups. Developed using WordPress, it features a responsive design, ensuring seamless compatibility across different browsers and screen sizes. The interface dynamically adjusts to various devices, providing an optimized user experience.

Aligned with the **ENHANCE visual identity**, developed in **M2** and published on the website Library, the website features static banners, **newsletter subscription forms**, and a logo carousel. The **homepage menu** and footer provide all essential information, including contact details, allowing visitors to easily reach the **project coordinator** via email or social media, as well as the project communication manager.

Hosted under the domain "**www.enhance-onehealth.eu**", the website will remain accessible for five years after the project concludes. It currently features seven main sections, with the flexibility to expand as needed to support the project's evolving objectives:

1. Home
2. About ENHANCE
3. Case Studies
4. News & Events
5. Library
6. Networking
7. Contact

The homepage provides a concise and **engaging overview of the project**, highlighting its key messages and essential facts in a clear and accessible manner. It also includes links to other sections for more detailed information.

2. Website structure

2.1 Main Menu

The goal was to design a clear and easily navigable structure, ensuring that the most important content is accessible in fewer than three clicks.



Figure 1: Website menu

2.2 Footer

Regardless of where the user is browsing, the **footer** (Figure 1) provides direct access to the **navigation menu**, **social media links** and subscription to the **ENHANCE newsletter**. A direct link to the **Cookies** and **Privacy Policy** is also available.

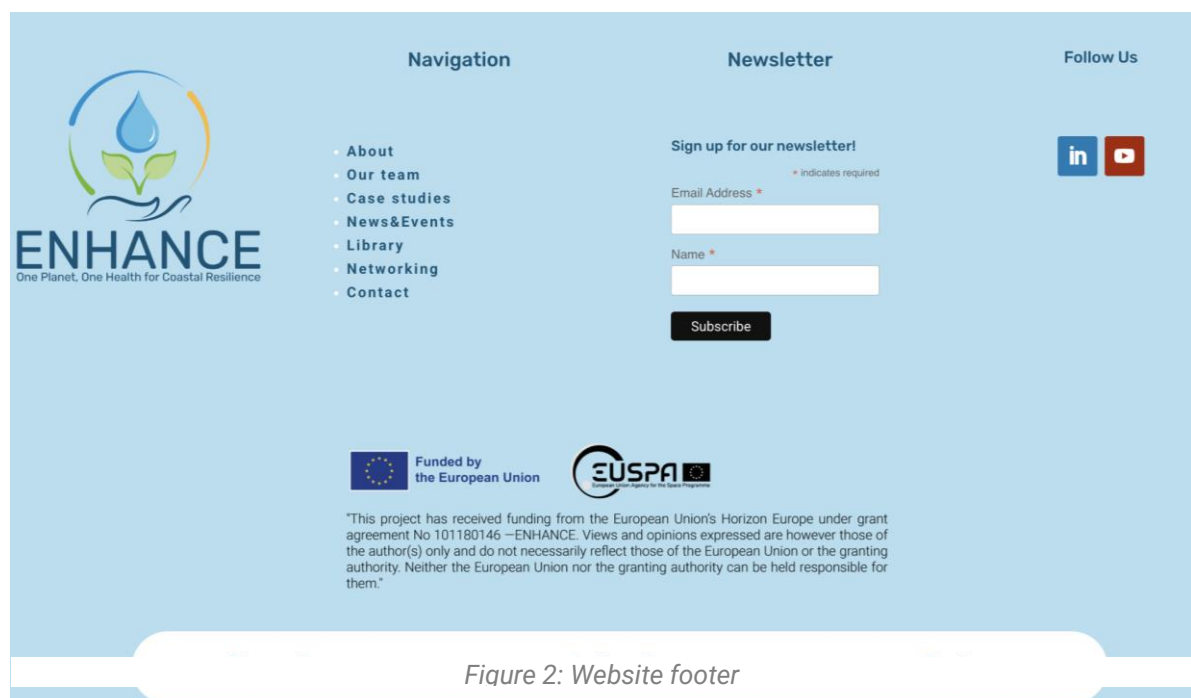


Figure 2: Website footer

3. Home page

URL: <https://enhance-onehealth.eu/>

The **home page** (Figure 2) provides a general overview of the project. It includes:

- **Brief presentation of ENHANCE** with key numbers
- Access to the **latest News** (with website articles and social media posts)
- Quick links to the **project case studies**
- **Partners' carousel** with direct link to their websites

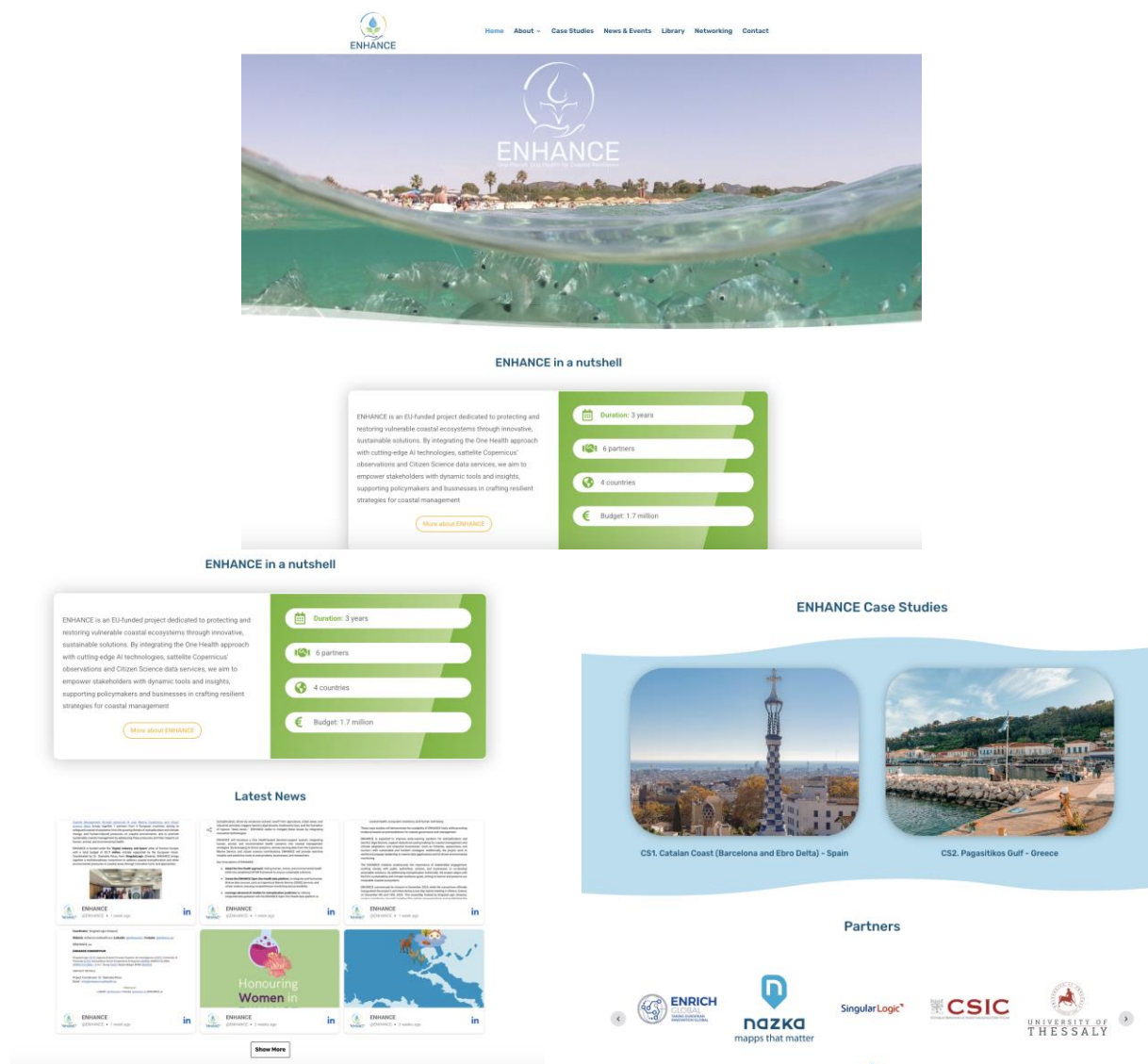


Figure 3: Home page

4. About ENHANCE

URL: <https://enhance-onehealth.eu/about-enhance/>

URL: <https://enhance-onehealth.eu/our-team>

URL: <https://enhance-onehealth.eu/advisory-board>

This section is divided into three sub-sections: **ENHANCE in a nutshell**, **Our Team**, and **Advisory Board**.

The “**ENHANCE in a nutshell**” sub-section (Figure 3) provides key information about the project, including its description, background, an introduction to the One Health Approach, objectives and a link to “Our Team” sub-section.

ENHANCE in a nutshell

ENHANCE is dedicated to protecting and restoring vulnerable coastal ecosystems through innovative, sustainable solutions.

By integrating the One Health approach with cutting-edge AI technologies, satellite Copernicus’ observations and Citizen Science data services, we aim to address environmental, human, and animal health challenges.

Ultimately, we aim to empower stakeholders with dynamic tools and insights, supporting policymakers and businesses in crafting resilient strategies for coastal management.



Background

Coastal zones, covering just 20% of the Earth’s surface, are vital for their environmental, economic, and social significance, yet they face immense pressures from human activities.

Hosting 45% of the global population, these areas are particularly vulnerable to nutrient pollution from agriculture, urban runoff, and industrial waste, leading to cultural eutrophication—a rapid and harmful process of algal blooms that degrades water quality and ecosystems.

This intensification, driven by land-use changes and freshwater regulation, highlights the urgent need for integrated management.

One Health Approach

This groundbreaking methodology represents a fresh, integrated way of thinking that addresses the complex interconnections between human health, animal health, and environmental health.

The One Health approach recognizes that the health of people is intricately linked to the health of animals and the environment we share. By breaking down traditional silos, this innovative strategy fosters collaboration across disciplines and sectors to tackle some of the most pressing challenges of our time, from emerging infectious diseases and antimicrobial resistance to climate change and biodiversity loss.



Figure 4: ENHANCE presentation and key info

The "**Our Team**" sub-section (Figure 4) displays the logos of the 6 partners participating in the project, arranged according to the official **project documentation**. Each logo serves as a direct link to the partner's website, providing additional information about their role and contributions.



Figure 5: Partners' logos with clickable button to their websites

The "**Advisory Board**" sub-section (Figure 5) is to feature the name, organization, position, and photograph of each ENHANCE Advisory Board member, along with a dropdown containing a short biography. It will remain hidden until the names and biographies of the participants are confirmed.



Figure 6: The Advisory Board section will display the names of its members

5. Case Studies

URL: <https://enhance-onehealth.eu/catalan-coast>

URL: <https://enhance-onehealth.eu/pagazitikos-gulf>

The "**Case Studies**" section (Figure 6) includes a dedicated part for each case study, all following a consistent structure. Each case study page provides information on its location, local context, planned actions and expected impacts, as well as the partners involved.

Catalan Coast: Barcelona's urban beaches and Ebro delta



Local Context

The Barcelona Metropolitan Area is home to some of the most heavily visited urban beaches in Catalonia, with more than 10 million visitors annually.

These beaches face significant environmental pressures, including eutrophication due to urbanization and storm-induced erosion.

The Ebro Delta, known for its agricultural activities and extensive aquaculture, faces challenges from freshwater inflows, agricultural runoff, and mussel farming.

These areas are critical to local biodiversity, tourism, and coastal health, requiring improved monitoring and management.

Planned Actions

In the Barcelona Metropolitan Area, the focus will be on analyzing the impacts of urbanization and storm events on beach ecosystems, integrating citizen science data for enhanced biodiversity monitoring and anthropogenic impacts.

In the Ebro Delta, the project will assess the effects of agricultural and aquaculture pressures on water quality and biodiversity.

Both areas will benefit from improved pressure and impact maps using Copernicus data, particularly imagery from Sentinel 2, data from monitoring programs, and participatory observations, enabling better coastal ecosystem management.



Expected Impacts

The project aims to improve the understanding of environmental pressures on both urban and rural coastal zones, providing valuable insights for sustainable management practices.

By integrating new technologies and citizen science, the project will enhance the ability to predict and mitigate pressures on coastal ecosystems, contributing to biodiversity conservation and better coastal health, while also supporting local stakeholders in their decision-making processes.



Lead partner in the area: CSIC

Case Study: Pagasitikos Gulf, Thessaly, Greece



Local Context

The Pagasitikos Gulf, located in central Greece, is a picturesque coastal area with significant agricultural production from the Thessaly plain.

However, following two catastrophic flooding events in September 2023, the region faced an unprecedented environmental crisis. The floods deposited toxic sediments, debris, and pathogens into the Gulf, threatening both the aquatic environment and public health.

Contaminants like agrochemicals, pathogens, and bacteria are now present in the water and marine life, raising concerns about food safety and the spread of zoonotic diseases.

Planned Actions

The focus of this case study will be to assess the recovery of the Gulf's ecosystem, with a comprehensive approach examining animal, environmental, and human health.

Monthly sampling campaigns will continue to monitor water quality, pathogens, and antimicrobial resistance, alongside satellite data to assess eutrophication and harmful algal blooms.

ENHANCE tools, including pressure assessments and pathogen measurements, will be integrated with local data to monitor the ongoing environmental recovery.



Expected Impacts

The project aims to provide a detailed analysis of the ecosystem's recovery timeline, identifying key factors influencing the restoration process.

By linking satellite data with in-situ sampling, ENHANCE will offer valuable insights into water quality, biodiversity, and food security.

The results will help local authorities, fisheries, and the community better manage the recovery of the Gulf and prevent future environmental disasters.



Lead partner in the area: UTH

Figure 7: Case studies' presentations on the dedicated page

6. News & Events

URL: <https://enhance-onehealth.eu/news-events/>

The "**News and Events**" section (Figure 7) will feature all updates and event-related information relevant to the ENHANCE project community. This includes **internal project meetings**, **organized events**, and **external events** where ENHANCE is represented or that are significant to the project.

News & Events

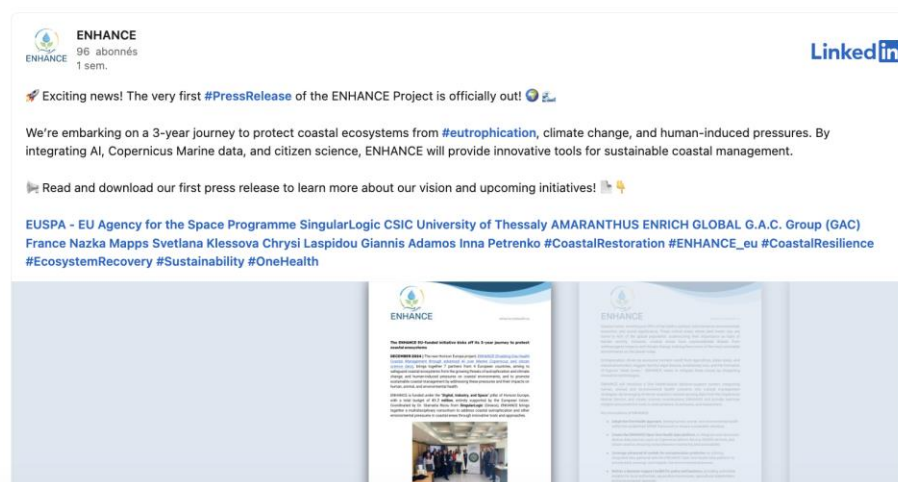


Figure 8: News & Events page displaying relevant social media posts and articles

7. Library

URL: <https://enhance-onehealth.eu/library/>

The "**Library**" section (Figure 8) will house all **publicly available documents** and outputs generated by the ENHANCE project. Currently, it includes four types of documents:

- **Media Kit** with our Brand items
- **Press Corner** featuring press releases
- **Newsletters**
- **Publications**, including factsheets and scientific papers
- **Deliverables**

As the project progresses and more results become available, this section will continue to expand. Designed as a dynamic resource, it will be updated based on project needs and newly produced materials.

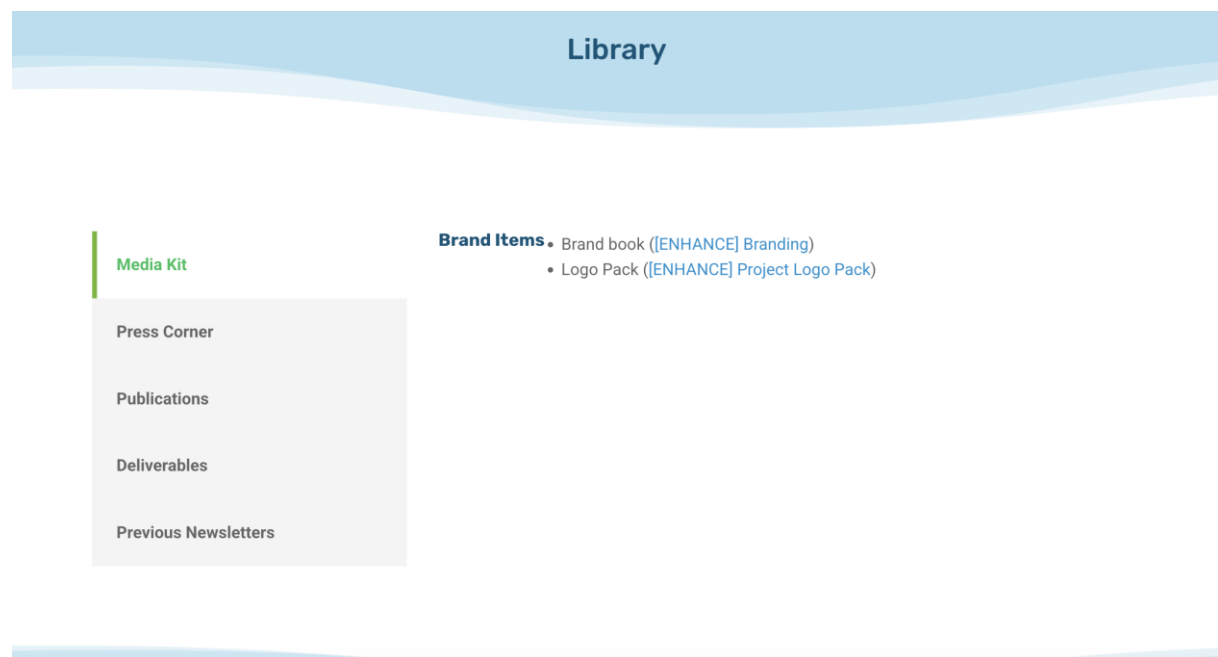


Figure 9: Different resources already available in the Library section

8. Networking

URL: <https://enhance-onehealth.eu/networking/>

The "**Networking**" section (Figure 9) highlights all the **projects and networks** with which ENHANCE will collaborate to build synergies and enhance the project's long-term impact. Each collaboration will be displayed in a dedicated box featuring the **logo, name, website link**, and a **brief description**.



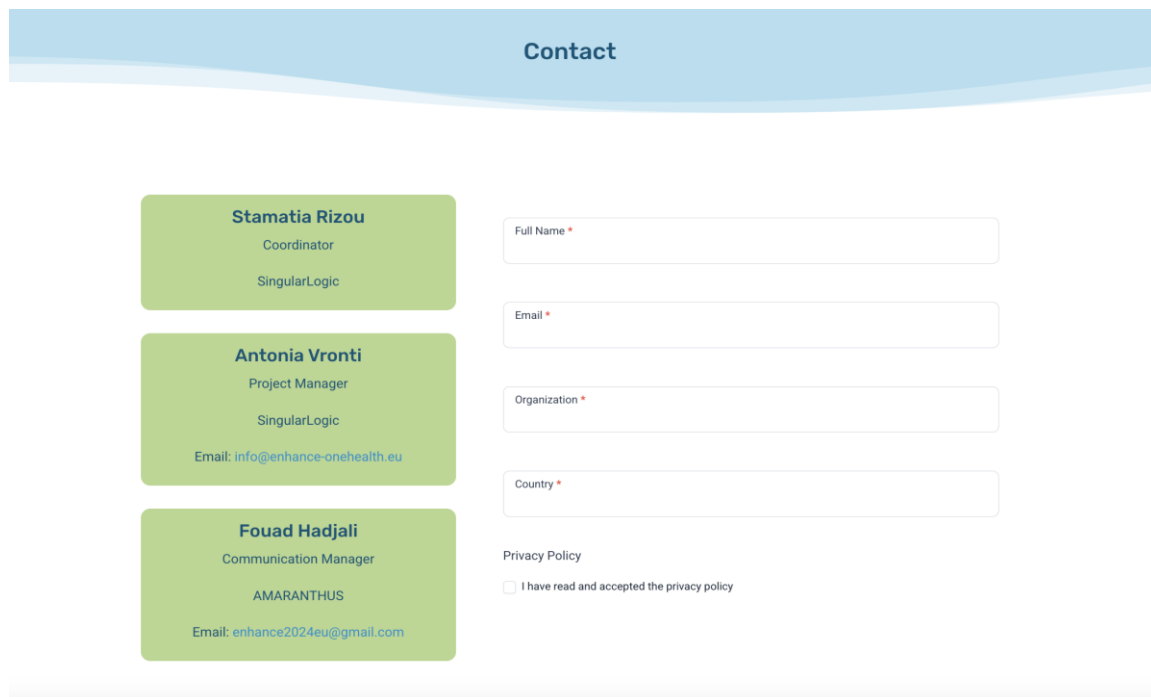
Figure 10: Networking page displaying projects and networks in which ENHANCE is involved

9. Contact

URL: <https://enhance-onehealth.eu/contact/>

The "Contact" section (Figure 10) displays the contact details of the **project coordinator**, **project manager**, and **communication manager**, including their **names**, **organizations**, and **email addresses**. It also features a simple contact form for submitting inquiries to info@enhance-onehealth.eu.

Managed by SingularLogic, this email will serve as the primary contact point, with incoming requests being monitored and internally directed to the appropriate recipient.



Contact

Stamatia Rizou
Coordinator
SingularLogic

Antonia Vronti
Project Manager
SingularLogic
Email: info@enhance-onehealth.eu

Fouad Hadjali
Communication Manager
AMARANTHUS
Email: enhance2024eu@gmail.com

Full Name *

Email *

Organization *

Country *

Privacy Policy
☐ I have read and accepted the privacy policy

Figure 11: Contact info and form for inquiries in the dedicated section

10. Post-Project Website Support, Sustainability, and Updates

The **ENHANCE website** is a key tool for project communication, dissemination, and stakeholder engagement. As an evolving platform, it will be continuously developed and updated to reflect the latest findings, case studies, and resources generated throughout the project.

Beyond its function as a public outreach tool, the website plays a **strategic role in supporting the exploitation of ENHANCE's Key Exploitable Results (KERs)**, particularly the **One Health Framework, One Health Platform, and One Health Toolkit**. By serving as a central hub for information and collaboration, it ensures that ENHANCE's outputs are accessible to a broad audience, including policymakers, researchers, industry stakeholders, and citizen scientists.

Looking forward, the website will be adapted to meet evolving project needs, incorporating new functionalities and content that enhance its usability and impact. By fostering engagement across multiple stakeholder groups, the website will contribute to the **long-term sustainability and scalability of the ENHANCE project's outcomes**.

The **ENHANCE website** will remain **accessible for at least five years** after the project's completion, ensuring the longevity of key project outcomes and fostering continued engagement with relevant stakeholders. **The Coordinator**, SingularLogic (SLG), will provide technical support for the website's maintenance, ensuring its functionality, security, and adaptability to evolving needs.

To enhance its exploitation potential and sustainability, the website will be linked to the One Health Platform - a key exploitable result of ENHANCE - serving as a gateway to project-generated tools and methodologies. Additionally, it will be connected to the **ENRICH GLOBAL (EG) Climate Change and Sustainability e-CoP**, a collaborative environment designed to facilitate continuous knowledge exchange and stakeholder engagement beyond the project's duration. These connections will allow for periodic updates based on evolving research, policy developments, and emerging needs from key user groups.

The website will also act as a foundation for the **exploitation of project results**, ensuring that outputs such as the One Health Framework, One Health Platform, and One Health Toolkit are accessible to scientific communities, policymakers, and industry stakeholders. By offering a structured repository of project knowledge and insights, the website will support **scientific and policy-oriented exploitation** while also facilitating the uptake of ENHANCE innovations by **real market actors**, including **decision-makers in coastal management, environmental monitoring, and related industries**. This positioning will strengthen evidence-based decision-making and the integration of One Health principles in sustainable coastal management.



enhance-onehealth.eu

#ENHANCE_eu



[@enhanceeu](https://www.linkedin.com/company/enhanceeu)



[@enhance_eu](https://www.youtube.com/channel/UC...)



Funded by
the European Union



"This project has received funding from the European Union's Horizon Europe under grant agreement No 101180146 –ENHANCE. Views and opinions expressed are however those of the author(s) only and do not necessarily reflect those of the European Union or the granting authority. Neither the European Union nor the granting authority can be held responsible for them."